



DeutscheTec GmbH

Automatic Door System Manufacturer



Contents

Automatic Sliding Doors	3	Automatic Revolving Doors	47
Slimline Sliding Doors	4	RV320/RV420	48
Airdrive68-Series	5	RVU300/RVU400	48
Airdrive68NG/FR	6	RVU300C/RVU400C	52
Airdrive68NG	7	Automatic Swing Doors	57
Airdrive68NG/Cristal	8	SW40	58
Airdrive68NG/H	9	Frames	60
Airdrive68EC	10	Accessories	62
Airdrive68PR	10	Hardware	67
Heavy Duty sliding Doors SLH-series	16	Manual Overhead Closers and Floor Springs	68
SLH240ES	17	DMS/DMS⁺	69
SLH240	18	Overview	72
SLH240/H	19		
SLH239	20		
Standard Sliding Doors	26		
Primedrive -Series			
Primedrive/FR	27		
Primedrive240	28		
Primedrive240/H	29		
Primedrive239	30		
Telescopic Sliding Doors	36		
TL240/240ES	37		
Break Out Sliding Doors	38		
BO240	38		
Curved Sliding Doors	39		
CR240	39		
Automatic Hygiene Doors	43		
Hermetic doors	44		



About us, Our mission, Our vision & Our values

Our vision and mission is to produce exceptional and modern entrance solutions with outstanding quality and aesthetics.

Our Electronics, Mechanical Engineering, Software and Design Teams are continuously pushing out the boundaries to create revolutionary entrance systems for you. The choice of automatic doors is huge. Meticulous quality control ensures that our products enter the market as impeccable as possible.

Having been certified the DIN ISO 9001: 2008, DIN 18650-1: 2005, DIN EN 60335-1: 2007 and EN ISO 13849-1: 2008 and being an eminent member of FTA (Germany's Automatic Doors Association), we promise our customers nothing less than absolute perfection.

DEUTSCHTEC Automatic Doors:

Efficiency and elegance in design and production.



Automatic Sliding Doors

Successfully combining aesthetics with innovative engineering and German quality has made Deutshtec GmbH one of the most innovative manufacturers of inspiring advanced, reliable and elegant automatic door systems worldwide. We have given "intelligent and processor-controlled" systems a whole new meaning. Whether you are looking for a discreet yet powerful sliding door, a solution for a spectacular oversized revolving door or a tall frameless glass swing door, we are here to deliver your vision. With Deutshtec, anything is possible!



Slimline Sliding Doors
Airdrive68-Series

| Discreet, Strong, Versatile and a Smooth Performer

Airdrive68-Series

68mm*135mm-a powerful fusion of state-of-the-art technology and aesthetics.

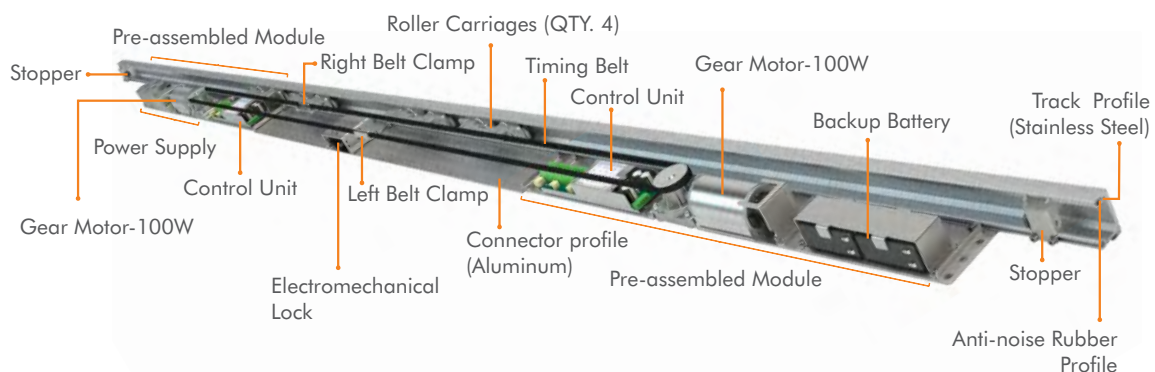
This German sliding door drive is the smallest on the world market.

LIKE THE HUMMING BIRD, the most miniscule bird in the world renowned for being incredibly brisk and agile yet silky smooth, our Airdrive series combines aesthetics with strength, reliability, smooth performance, a long life and an added bonus: Airdrive can easily be connected to the internet, computers or mobile phones to allow you to control your entrance at all times remotely and because we only use premium materials AIRDRIVE continues to perform quietly when other sliding doors have started to rattle and squeak.



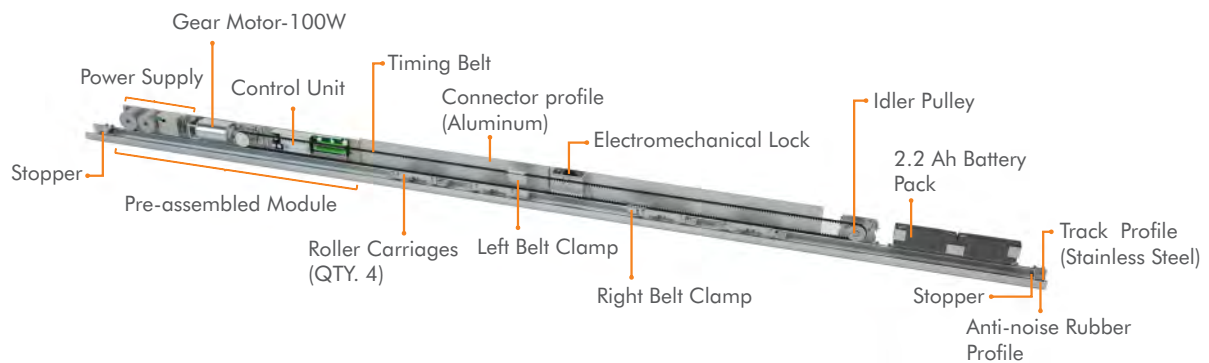
Airdrive68NG/FR for Emergency Exit Doors

Deutschtec Airdrive68NG/FR is the ultimate certified solution for the highest levels of safety in escape routes. This system is an innovative development utilising two Gear Motors and controllers, one for the opening cycle (Slave) and one for the closing cycle (Master). Two motors combined with super-strong profiles ensure that the life span more than doubles whilst maintaining silent operation. In the event of an emergency, both sets are able to open.



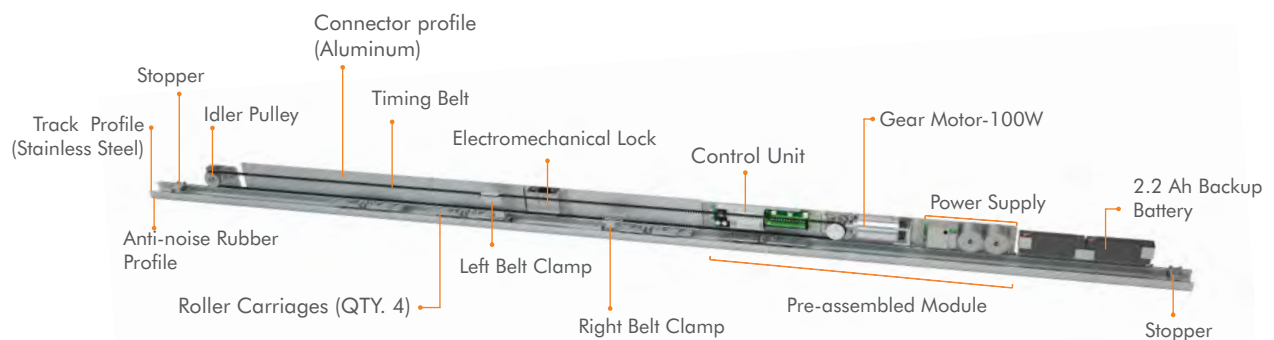
Airdrive68NG-the Discreet Sliding Door Solution

With a mere 68mm height and 135mm depth Airdrive has the smallest sliding door profile depth in the world! Combining aesthetics with state-of-the-art technology this German luxury product is equipped with a 100W motor and has been engineered to move a door leaf of up to 135kg making it the perfect solution to enhance your Grand Design!



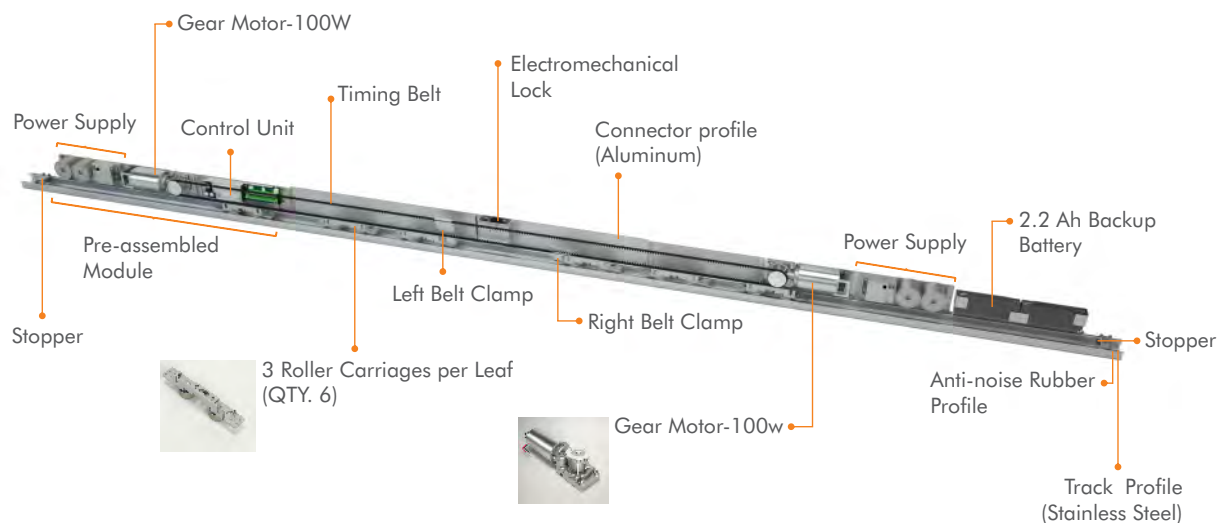
Airdrive68NG/Cristal-the all-glass solution

While boasting all regular and special features of the Airdrive68NG sliding system, this product enhances any architecture due to it being full-glass, which means that by showering the building with natural light, it gifts you with a breath of freshness and life.



Airdrive68NG/H-with two motors for heavier doors

Equipped with two powerful German-made 100W brushed motors and three roller carriages per sliding leaf this HEAVY DUTY sliding door system has been engineered to operate door leaf weights of up to 170kg all still contained within the amazingly tiny frame dimensions. Like its other state-of-the-art parts, the motors are fully made in Germany and are absolutely indestructible. They are so quiet that whilst in action, you will hear nothing but a muffled sound.



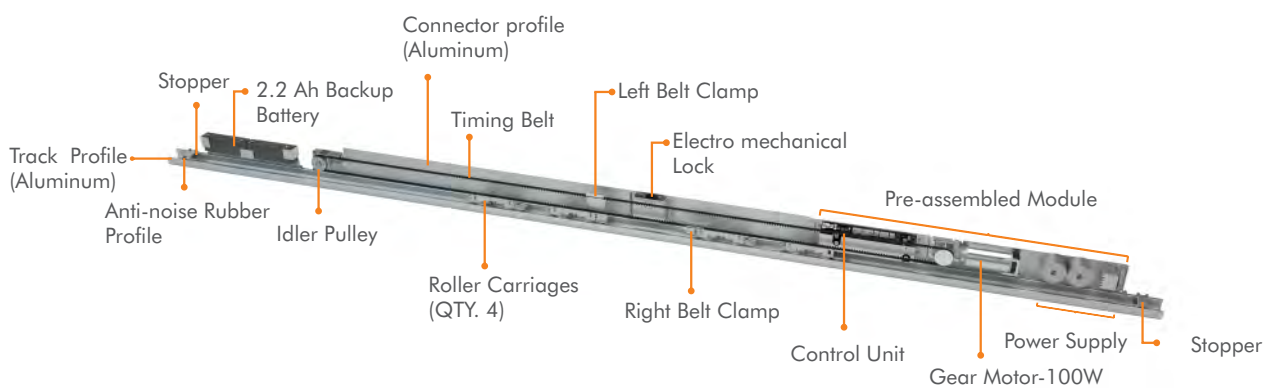
Airdrive68PR

Gear Motor Power: 100 W

Track Profile: Stainless Steel / Aluminium

Power Supply: 130VA

Max Door Leaf Weight: 1 x 150 kg



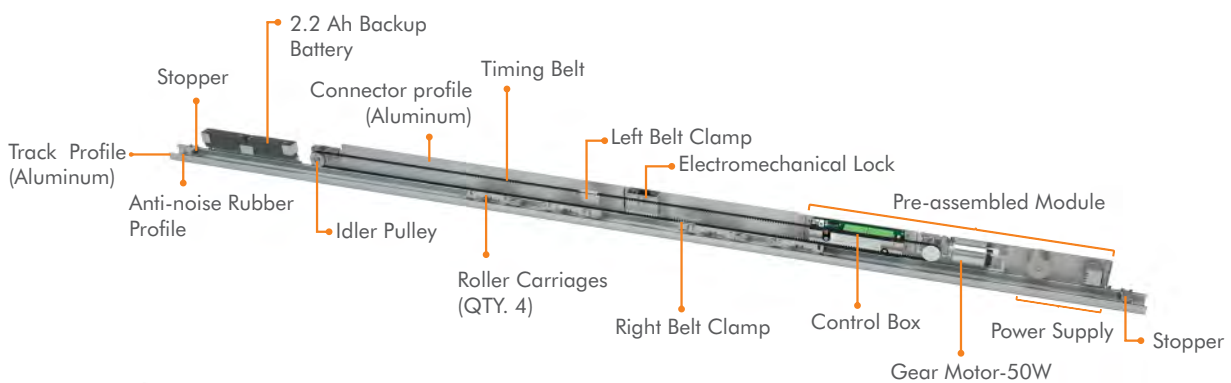
Airdrive68EC

Gear Motor Power: 50 W

Track Profile: Aluminum

Power Supply: 65VA

Max Door Leaf Weight: 1 x 100 kg



Some unique features of Airdrive68NG, Airdrive68NG/Cristal and Airdrive68NG/H are:

Control Unit

Meeting the following standards:

EN ISO 13849-1

DIN 18650-2

DIN 18650-1

EN 16005

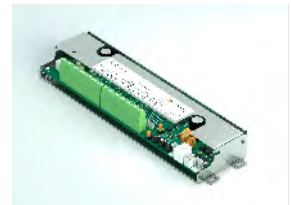
EN 60335-1

Curability-tested for 1 million cycles

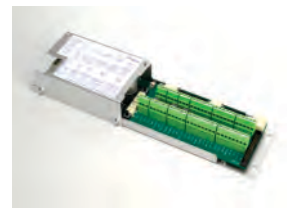
Airdrive68PR



Airdrive68EC



Airdrive68NG
Airdrive68NG/FR*
Airdrive68NG/Cristal
Airdrive68NG/H



Gear Motor

Like its other state-of-the-art parts, Deutschtec Airdrive68NG brushed motors are fully made in Germany. Their 100W (and 50W for Airdrive EC) motors are absolutely indestructible and are there to ensure reliable performance for a lifetime. (Other sliding door motors are brushless DC motors, which suffer from severe energy dissipation. The excess energy is released in the form of heat, which causes the gears inside the gearbox to corrode.) Our doors have a much longer life cycle because we use brushed DC motors, which are so quiet that while in action, you will hear nothing but a muffled sound.



German-Made
100 W

Track Profile

Stainless Steel Track Profile | Timeless Presence

Deutschtec Airdrive68NG is synonymous with entry solutions that please your eyes and pamper your ears. Our Premium Quality Steel Profiles are fitted with anti-noise buffers for frictionless movement and combined with heavy-duty roller carriages to ensure you won't hear a sound for years and years. Unlike aluminium profiles used on many sliding doors, our steel profiles withstand the weight of the moving sliding doors effortlessly rather than inferior materials which corrode and eventually make irritating noises. Additionally we use German made premium quality circuit boards to guarantee a long trouble-free operating life.



Aluminum Track Profile

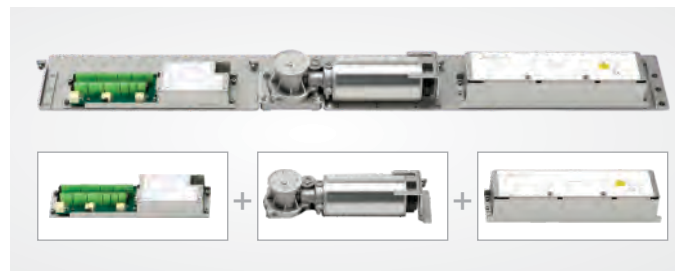
Aluminum track profile with a sound-proofing rubber profile

*Escape version



Pre-Assembled Module

Pre-assembling the unit by factory-mounting most parts on the module make the installation and servicing of this stunning and innovative system amazingly quick and easy. The installer simply has to position the module with its all pre-assembled parts.



Green Technology*

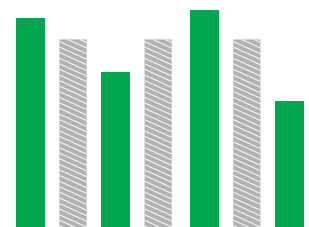
Less than 0.5 W usage in locked and fully-open positions

This unique feature, exclusively patented by Deuschtec GmbH has a considerable effect on energy consumption: when putting the door in fully-open or locked positions, sensors will turn off.

Moreover, all energy consumers connected to the operator will shut out and the system's energy usage will be limited to a very low current for charging and keeping the battery in good condition.

By pressing any button of the digital key, changing the mechanical key status or turning the safety key outside the door, the system will immediately start running and functioning just as smoothly. When the door is in fully-open or locked position, it uses less than 0.5 W.

* Airdrive68PR and Airdrive68EC do not have this feature.



Airdrive68 Series Product Overview

	Airdrive68NG/FR [*]	Airdrive68NG	Airdrive68NG/ ^{**} Cristal	Airdrive68NG/H	Airdrive68PR	Airdrive68EC
Opening width - single panel	800 - 2000 mm	800 - 2000 mm	800 - 2000 mm	800 - 2000 mm	800 - 2000 mm	800 - 2000 mm
Opening width - double panel	1000 - 3000 mm	1000 - 3000 mm	1000 - 3000 mm	1000 - 3000 mm	1000 - 3000 mm	1000 - 3000 mm
Max leaf weight, single	1 x 150 Kg	1 x 150 Kg	1 x 150 Kg	1 x 170 Kg	1 x 150 Kg	1 x 100 Kg
Max leaf weight, double	2 x 135 Kg	2 x 135 Kg	2 x 135 Kg	2 x 150 Kg	2 x 135 Kg	2 x 80 Kg
Operator height	68 mm	68 mm	68 mm	68 mm	68 mm	68 mm
Operator depth	135 mm	135 mm	135 mm	135 mm	135 mm	135 mm
Opening speed	Variable up to 0.9 m/s (Double leaves)	Variable up to 0.9 m/s (Double leaves)	Variable up to 0.9 m/s (Double leaves)	Variable up to 0.9 m/s (Double leaves)	Variable up to 0.9 m/s (Double leaves)	Variable up to 0.9 m/s (Double leaves)
Closing speed	Variable up to 0.9 m/s (Double leaves)	Variable up to 0.9 m/s (Double leaves)	Variable up to 0.9 m/s (Double leaves)	Variable up to 0.9 m/s (Double leaves)	Variable up to 0.9 m/s (Double leaves)	Variable up to 0.9 m/s (Double leaves)
Hold-open time	0 - 30 s	0 - 30 s	0 - 30 s	0 - 30 s	0 - 30 s	0 - 30 s
Ambient temperature	-15 to + 50°C	-15 to + 50°C	-15 to + 50°C	-15 to + 50°C	-15 to + 50°C	-15 to + 50°C
Protection class	IP 20	IP 20	IP 20	IP 20	IP 20	IP 20
Track profile	Stainless Steel / Aluminium	Stainless Steel / Aluminium	Stainless Steel / Aluminium	Stainless Steel / Aluminium	Stainless Steel / Aluminium	Aluminium
Anti-noise rubber profile	✓	✓	✓	✓	✓	✓
External protected power supply	✓	✓	✓	✓	-	-
Power supply power	230V / 130VA	230V / 130VA	230V / 130VA	230V / 260VA	230V / 130VA	230V / 65VA
Gear motor power	100 W	100 W	100 W	100 W	100 W	50 W
Number of motors	2	1	1	2	1	1
Number of control units	2	1	1	1	1	1
Roller carriages per leaf	2	2	2	3	2	2

* Escape version

**When calculating the door leaf weight please allow 2.5kg for every m² of glass per 1mm thickness of glass thickness. Allow for the weight of fittings too.

Airdrive68 Series Product Overview

	Airdrive68NG/FR [*]	Airdrive68NG	Airdrive68NG/ Cristal ^{**}	Airdrive68NG/H	Airdrive68PR	Airdrive68EC
Dual gear motor & control unit set for master & slave concept	✓	-	-	-	-	-
Max power consumption	250 W	250 W	250 W	500 W	250 W	200 W
Backup battery for emergency opening	✓	-	-	-	-	-
Max operation cycles with 2.2 Ah battery (Optional)	-	≈400	≈400	≈400	≈400	≈400
Possibility to adjust force limitation according to DIN18650 & EN16005	✓	✓	✓	✓	✓	✓
Possibility to use safety sensors with testing signal	✓	✓	✓	✓	✓	✓
Emergency exit routes in both directions	✓	-	-	-	-	-
Mechanical key switch (Optional)	✓	✓	✓	✓	✓	✓
24V DC output for external accessories	✓	✓	✓	✓	✓	✓
Power Lock	✓	✓	✓	✓	✓	✓
Electromechanical Lock (Optional)	✓	✓	✓	✓	✓	✓
Lock monitoring	✓	✓	✓	✓	✓	✓
Possibility of using digital program switch (Optional)	✓	✓	✓	✓	✓	✓
Read-out error memory with error codes (with digital programme switch)	✓	✓	✓	✓	✓	✓
Programmable output (Optional)	✓	✓	✓	✓	✓	✓
Programmable input (Optional)	✓	✓	✓	✓	✓	✓
Possibility of using DMS & DMS+ (Door management system)	✓	✓	✓	✓	-	-
Max Glass Thickness (mm)	TBS,UTS,Air-TBS = 22 mm	TBS,UTS,Air-TBS = 22mm Saturn=10 mm Frameless= 12mm	12 mm	TBS,UTS,Air-TBS =22mm Saturn=10 mm Frameless= 12mm	TBS,UTS,Air-TBS =22mm Saturn=10 mm Frameless= 12mm	TBS,UTS,Air-TBS = 22mm Saturn=10 mm Frameless= 12mm

* Escape version

**When calculating the door leaf weight please allow 2.5kg for every m² of glass per 1 mm thickness of glass thickness. Allow for the weight of fittings too.

Airdrive68 Series Product Overview

Standard	Airdrive68NG/FR [*]	Airdrive68NG	Airdrive68NG/Cristal ^{**}	Airdrive68NG/H	Airdrive68PR	Airdrive68EC
DIN 18650	✓	✓	✓	✓	✓	✓
EN 16005	✓	✓	✓	✓	✓	✓
EN 60335	✓	✓	✓	✓	✓	✓
EN ISO 13849	✓	✓	✓	✓	✓	✓
EU low voltage directives	✓	✓	✓	✓	✓	✓
EU EMC directives	✓	✓	✓	✓	✓	✓
ISO 9001	✓	✓	✓	✓	✓	✓
CE conformity	✓	✓	✓	✓	✓	✓
1.000.000 cycles durability test	✓	✓	✓	✓	✓	✓

* Escape version

Frame Types

TBS	✓	✓	-	✓	✓	✓
UTS	✓	✓	-	✓	✓	✓
Saturn	-	✓	-	✓	✓	✓
Frameless	-	✓	✓	✓	✓	✓

**When calculating the door leaf weight please allow 2.5kg for every m² of glass per 1mm thickness of glass thickness. Allow for the weight of fittings too.

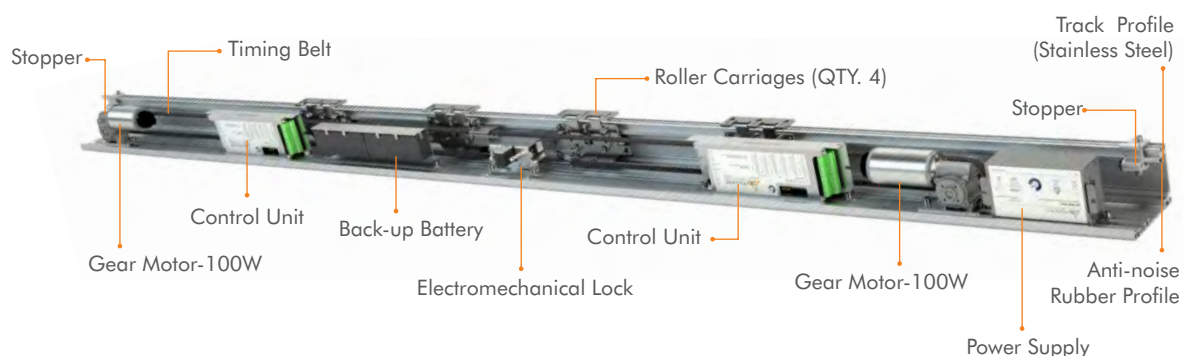


Heavy Duty Sliding Doors

SLH-Series | Reliable performance for large, heavy doors

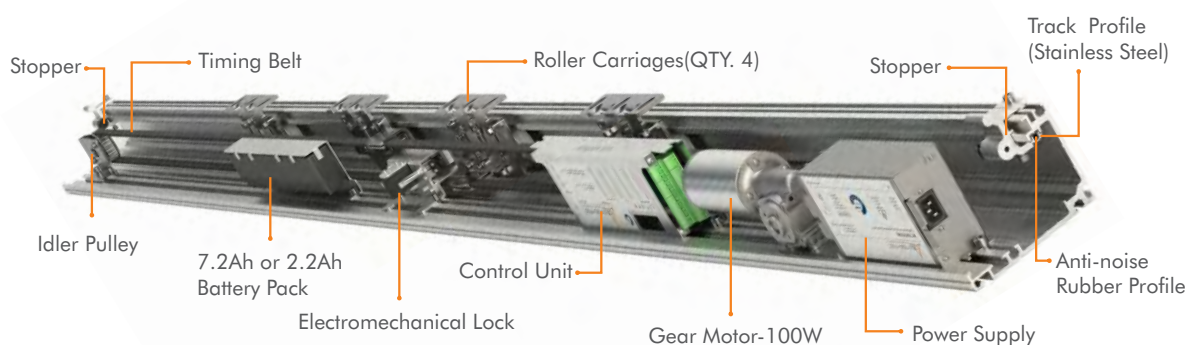
SLH240ES for Heavy Emergency Exit Doors

Deuschtec SLH240ES is your best option for large and heavy interior and exterior emergency exit doors, where tall or wide heavy double or even triple-glazed doors have to be automated. The super-strong SLH240ES moves door leaves of up to 200kg for single doors and 150kg for each double door leaf and is incredibly resistant to wear and tear whilst offering high levels of safety and security. The operator is 155mm high and 160mm deep. SLH240ES is equipped with two Gear Motors and two control units, one for the opening cycle (Slave) and one for closing cycle (Master). The two motors also means silent operation and more than doubling the operating life. In an emergency both sets are able to open the door. Its stainless steel profiles withstand the weight of the moving sliding doors for an incredible length of time instead of corroding and making irritating noises. The SLH240ES is an excellent choice in terms of energy-saving and cost-effectiveness. SLH240ES has been certified as a product which satisfies all safety needs.



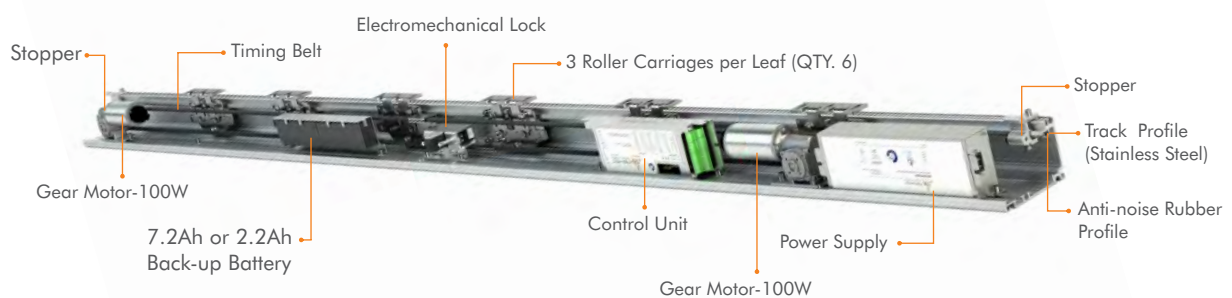
SLH240 for large and heavy doors

Deutschtec SLH240 is your ultimate solution for large and heavy interior or exterior doors where tall or wide heavy double or even triple-glazed doors have to be automated. The super-strong SLH240 moves door leaves of up to 200kg for single doors and 150kg for each double door leaf and is incredibly resistant to wear and tear. Due to its rubber profile, you hear nothing more than a whisper. Its stainless steel profiles withstand the weight of the moving sliding doors for a long time instead of corroding and making irritating noises, which makes SLH240ES an excellent choice in terms of energy-saving and cost-effectiveness. The operator is 155mm high and 160 mm deep.



SLH240/H for extremely heavy doors

Deutschtec SLH240/H is your ultimate 'fit-for-purpose' solution for tall or wide and heavy interior or exterior doors with double or triple-glazing. The extra-strong SLH240/H is equipped with two 100W motors and innovatively three roller carriages per door leaf to ensure door leaves of up to 500kg for single doors and 300kg for each double door leaf are operated reliably. Our SLH240/H is incredibly resistant to wear and tear and has an operator height of 155mm and a depth of 160mm.



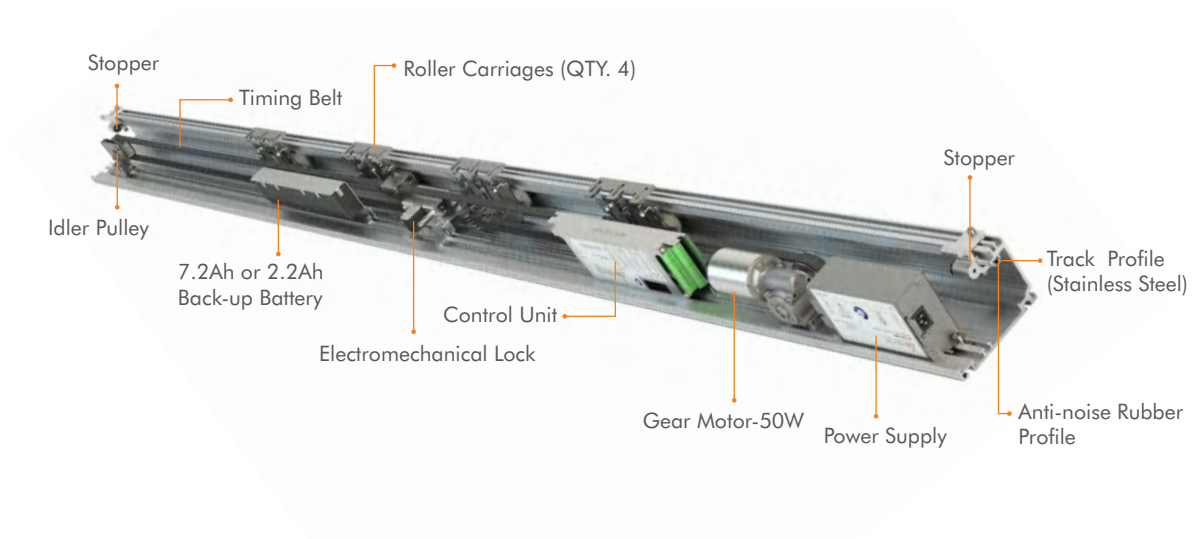
Power Pack

The SLH240/H operator draws additional electrical power to operate extremely heavy door leaves from our high capacity reliable power packs.



SLH239 for standard sliding doors

Deutschtec SLH239 is your best option for interior or exterior doors with high traffic where normal glass and average-sized door will do just fine. This reliable model operates door leaves up to 150kg single leaf and 100 kg per each double leaf and is an excellent combination of contemporary design and cutting-edge technology. The operator is 155mm high and 160mm deep.



Control Unit

Deuschtec has collaborated with Leesy GmbH (Leipzig Electronic Systems), part of Siemens Enterprise Communication, to create a reliable, advanced high-tech control unit Made in Germany. Our latest software has equipped this control unit to save more energy, be more user-friendly and allow door networking for up to 256 doors without any additional device requirement and an unlimited number of doors by building segmented network branches.



Gear Motor

The SLH series is driven by a powerful and reliable electromotor made in the Black Forest by German manufacturer. Motors meet various international standards, are robust, maintenance-free and have a long life cycle.



Power Lock

In many cases, there is no real need for the (optional) electromechanical lock because security is safeguarded by other means. However, wherever access is controlled directly via the main entrance door the power lock function is a wholesome solution. If there is an attempt to force the door open whilst it is locked, the motor will use its maximum power to keep the door leaves locked together. This solution makes it practically impossible for unauthorized individuals to enter the building.



Track Profile

Stainless Steel Track profile:

Since Deuschtec's stainless steel track profiles are of rust-proof grade and have inbuilt abrasion resistance, they will never need to be replaced, thus representing excellent value for your money saving on material and labour costs. Altogether a very sustainable solution.



Aluminium Track profile:

When Deuschtec's detachable aluminum track profiles have eventually worn out, they can easily be replaced in sections, which is of course less costly when compared to replacing the entire rail.



SLH Series Product Overview

Technical Detail	SLH240ES*	SLH240	SLH240/H	SLH239
Opening width - single panel	800 - 2000 mm	800 - 2000 mm	800 - 2000 mm	800 - 2000 mm
Opening width - double panel	1000 - 3000 mm	1000 - 3000 mm	1000 - 3000 mm	1000 - 3000 mm
Max leaf weight, single	1 x 200 Kg	1 x 200 Kg	1 x 500 Kg	1 x 150 Kg
Max leaf weight, double	2 x 150 Kg	2 x 150 Kg	2 x 300 Kg	2 x 100 Kg
Operator height	155 mm	155 mm	155 mm	155 mm
Operator depth	160 mm	160 mm	160 mm	160 mm
Opening speed	Variable up to 1.1m/s (Double leaves)	Variable up to 1.1m/s (Double leaves)	Variable up to 1.1m/s (Double leaves)	Variable up to 1.1m/s (Double leaves)
Closing speed	Variable up to 1.1m/s (Double leaves)	Variable up to 1.1m/s (Double leaves)	Variable up to 1.1m/s (Double leaves)	Variable up to 1.1m/s (Double leaves)
Hold-open time	0 - 30 s	0 - 30 s	0 - 30 s	0 - 30 s
Ambient temperature	-15 to + 50°C	-15 to + 50°C	-15 to + 50°C	-15 to + 50°C
Protection class	IP 20	IP 20	IP 20	IP 20
Track profile	anti-crash Stainless Steel / Aluminium	anti-crash Stainless Steel / Aluminium	anti-crash Stainless Steel / Aluminium	anti-crash Stainless Steel / Aluminium
Anti-noise rubber profile	✓	✓	✓	✓
External protected power supply	✓	✓	✓	✓
Power supply power	230V / 92VA	230V / 92VA	230V / 184VA	230V / 92VA
Gear motor power	100 W	100 W	100 W	50 W
Number of motors	2	1	2	1
Number of control units	2	1	1	1
Roller carriages per leaf	2	2	3	2
Dual gear motor and control unit set for master and slave concept	✓	-	-	-

* Escape version

SLH Series Product Overview

Technical Detail	SLH240ES*	SLH240	SLH240/H	SLH239
Max power consumption	250 W	250 W	600 W	200 W
Backup battery for emergency opening	✓	-	-	-
Max operation cycles with 2.2 Ah battery (Optional)	-	≈400	≈400	≈400
Max operation cycles with 7.2 Ah battery (Optional)	-	≈1000	≈1000	≈1000
Possibility to adjust force limitation according to DIN18650 and EN16005	✓	✓	✓	✓
Possibility to use safety sensors with testing signal	✓	✓	✓	✓
Emergency exit routes in both directions	✓	-	-	-
Mechanical key switch (Optional)	✓	✓	✓	✓
24V DC output for external accessories	✓	✓	✓	✓
Power Lock	✓	✓	✓	✓
Electromechanical Lock (Optional)	✓	✓	✓	✓
Lock monitoring	✓	✓	✓	✓
Possibility of using digital program switch (Optional)	✓	✓	✓	✓
Read-out error memory with error codes (with digital program switch)	✓	✓	✓	✓
Programmable output (Optional)	✓	✓	✓	✓
Programmable input (Optional)	✓	✓	✓	✓
Possibility of using DMS & DMS+	✓	✓	✓	✓
Max Glass Thickness (mm)	TBS,UTS = 22mm THB=32mm	TBS,UTS = 22mm THB=32mm Saturn=10 mm Frameless= 12mm	TBS,UTS = 22mm THB=32mm Saturn=10 mm Frameless= 12mm	TBS,UTS = 22mm THB=32mm Saturn=10 mm Frameless= 12mm

*Escape version

Standards	SLH240ES*	SLH240	SLH240/H	SLH239
Compliant with German standard DIN 18650	✓	✓	✓	✓
Compliant with EU standard EN 16005	✓	✓	✓	✓
Compliant with EU standard EN 60335	✓	✓	✓	✓
Compliant with EU standard EN ISO 13849-1	✓	✓	✓	✓
Compliant with EU low-voltage directives	✓	✓	✓	✓
Compliant with EU EMC directives	✓	✓	✓	✓
Manufactured according to ISO 9001	✓	✓	✓	✓
TÜV approved	✓	✓	-	✓
CE conformity	✓	✓	✓	✓
Tested for 1.000.000 cycles	✓	✓	✓	✓

*Escape version

Frame Types

THB	✓	✓	✓	✓
TBS	✓	✓	✓	✓
UTS	✓	✓	✓	✓
Saturn	-	✓	✓	✓
Frameless	-	✓	✓	✓



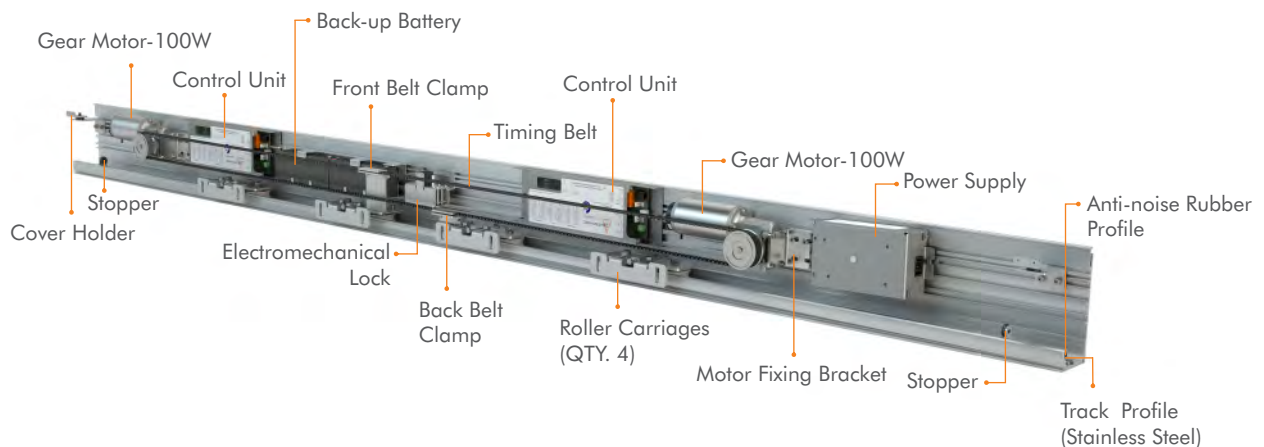
Standard Sliding Doors
Primedrive-Series

| combining sleek profiles, strength and reliability

Primedrive/FR for Emergency Exit Doors

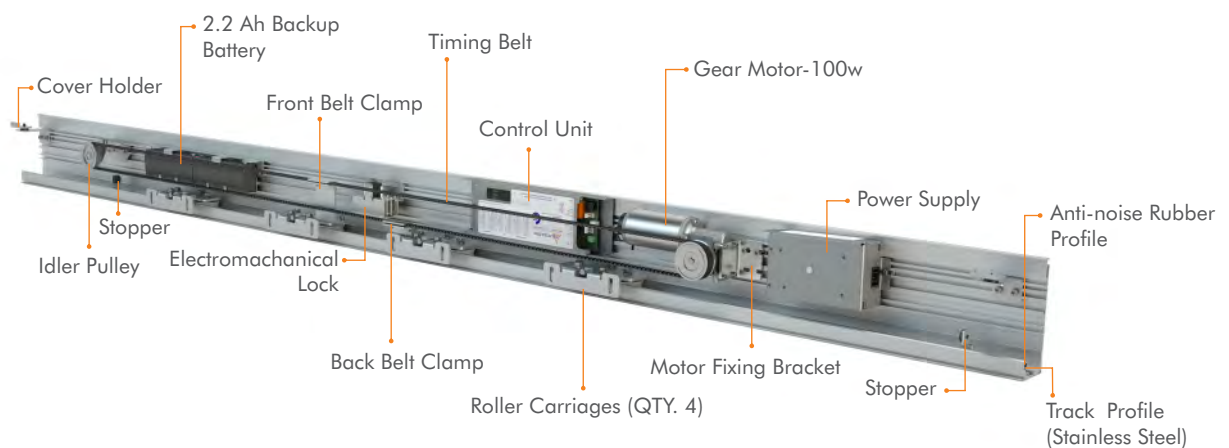
Your safety is of paramount importance to Deuschtec hence the reason why we are presenting you with our Primedrive/FR for emergency exit doors with a weight of up to 200kg (single leaf) or 2x150kg (double leaf). Although these very secure entry solutions have been especially designed and produced emergency exits they can also be installed as standard sliding doors.

To safeguard the emergency exit route Primedrive/FR is equipped with two brushed gear motors and two control units. Two motors also provide silent operation and more than double the operating life. Primedrive/FR has been certified to meet the most stringent German and European standards: DIN18650, EN16005, EN60335, EN13849. The Primedrive operator is 100mm high and 174mm deep.



Primedrive240 for Standard Sliding Doors

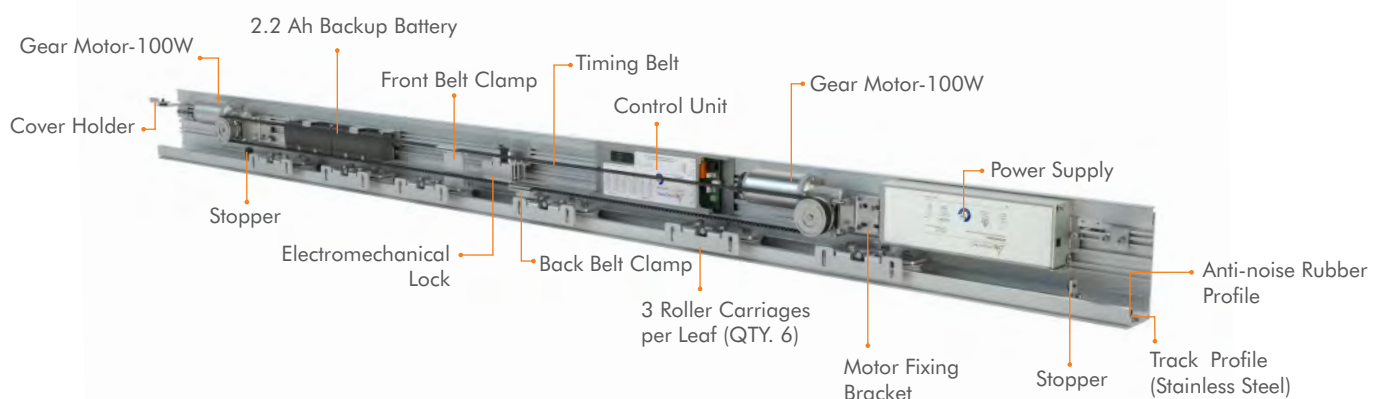
Primedrive240 is a versatile solution for standard interior or exterior doors with a high volume of traffic. Primedrive automates double or even triple-glazed doors up to 200kg (single leaf) and 150kg (each double leaf) and is incredibly resistant to wear and tear. The operator is 100mm high and 174mm deep.



Primedrive/H for large and heavy sliding doors

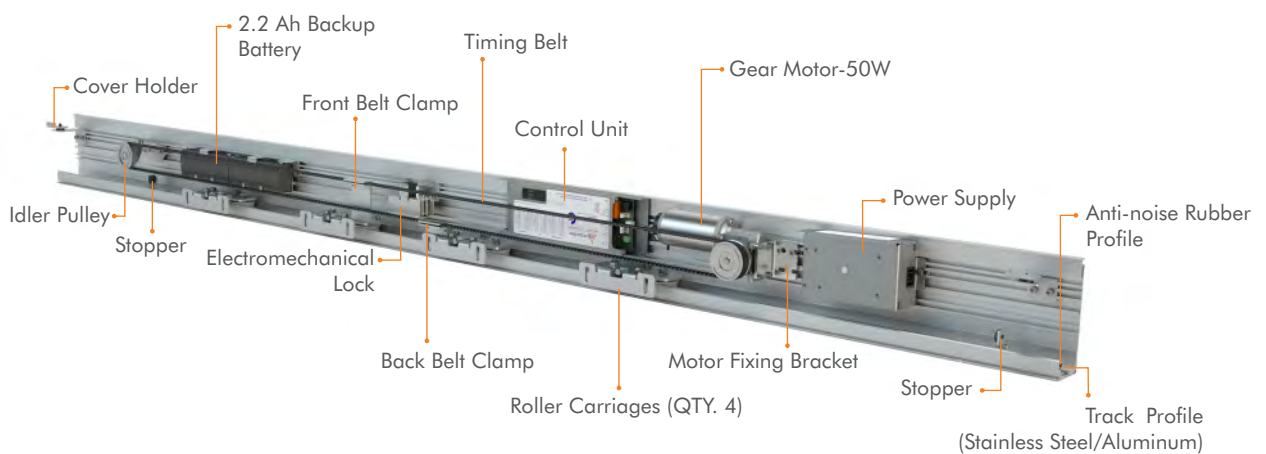
Primedrive/H is a powerful solution to automate large and heavy interior and exterior double or even tripleglazed sliding doors. Super-strong Primedrive moves door leaves of up to 400kg for single doors and 250kg for each double door leaf and is incredibly resistant to wear and tear due to its two motors and 3 roller carriages per sliding door leaf.

Our secret formula to achieving this winning combination of incredible strength and surprisingly modest dimensions (H 100mm x D 174mm) is a fusion of clever engineering and German premium quality parts.



Primedrive239 for Standard Sliding Doors

Primedrive239 is a very versatile solution for the slightly lighter single glazed interior or exterior doors. Primedrive239 automates sliding doors up to 150kg (single leaf) and 100kg (each double leaf) and is incredibly resistant to wear and tear. The operator is 100mm high and 174mm deep.



Primedrive Series Product Overview

Technical Detail	Primedrive/FR *	Primedrive240	Primedrive/H	Primedrive239
Opening width - single panel	800 - 2000 mm	800 - 2000 mm	800 - 2000 mm	800 - 2000 mm
Opening width - double panel	1000 - 3000 mm	1000 - 3000 mm	1000 - 3000 mm	1000 - 3000 mm
Max leaf weight, single	1 x 200 Kg	1 x 200 Kg	1 x 400 Kg	1 x 150 Kg
Max leaf weight, double	2 x 150 Kg	2 x 150 Kg	2 x 250 Kg	2 x 100 Kg
Operator height	100 mm	100 mm	100 mm	100 mm
Operator depth	174 mm	174 mm	174 mm	174 mm
Opening speed	Variable up to 1.1m/s (Double leaves)	Variable up to 1.1m/s (Double leaves)	Variable up to 1.1m/s (Double leaves)	Variable up to 1.1m/s (Double leaves)
Closing speed	Variable up to 1.1m/s (Double leaves)	Variable up to 1.1m/s (Double leaves)	Variable up to 1.1m/s (Double leaves)	Variable up to 1.1m/s (Double leaves)
Hold-open time	0 - 30 s	0 - 30 s	0 - 30 s	0 - 30 s
Ambient temperature	-15 to + 50°C	-15 to + 50°C	-15 to + 50°C	-15 to + 50 C
Protection class	IP 20	IP 20	IP 20	IP 20
Track profile	Stainless Steel, Aluminum	Stainless Steel, Aluminum	Stainless Steel, Aluminum	Stainless Steel, Aluminum
Anti-noise rubber profile	✓	✓	✓	✓
External protected power supply	✓	✓	✓	✓
Power supply unit	230V / 92VA	230V / 92VA	230V / 184VA	230V / 92VA
Gear motor power	100 W	100 W	100 W	50 W
Number of motors	2	1	2	1
Number of control units	2	1	1	1
Number of roller carriages	2	2	3	2

*Escape version

Primedrive Series Product Overview

Technical Detail	Primedrive/FR*	Primedrive240	Primedrive/H	Primedrive239
Dual gear motor & control unit set for master & slave concept	✓	-	-	-
Max power consumption	250 W	250 W	500 W	200 W
Backup battery for emergency opening	✓	-	-	-
Max operation cycles with 2.2 Ah battery (Optional)	-	≈400	≈400	≈400
Possibility to adjust force limitation according to DIN18650 & EN16005	✓	✓	✓	✓
Possibility to use safety sensors with testing signal	✓	✓	✓	✓
Emergency exit routes in both directions	✓	-	-	-
Mechanical key switch (Optional)	✓	✓	✓	✓
24V DC output for external accessories	✓	✓	✓	✓
Power Lock	✓	✓	✓	✓
Possibility of using electromechanical lock (Optional)	✓	✓	✓	✓
Lock monitoring	✓	✓	✓	✓
Possibility of using digital program switch (Optional)	✓	✓	✓	✓
Read-out error memory with error codes (with digital program switch)	✓	✓	✓	✓
Programmable output (Optional)	✓	✓	✓	✓
Programmable input (Optional)	✓	✓	✓	✓
Possibility of using DMS & DMS+	✓	✓	✓	✓
Max Glass Thickness (mm)	TBS, UTS=22 mm THB=32 mm	TBS,UTS=22mm THB=32mm Saturn=10 mm Frameless=12mm	TBS,UTS=22mm THB=32mm Saturn=10 mm Frameless=12mm	TBS,UTS=22mm THB=32mm Saturn=10 mm Frameless=12mm

*Escape version

Frame Types	Primedrive/FR [*]	Primedrive240	Primedrive/H	Primedrive239
TBS	✓	✓	✓	✓
THB	✓	✓	✓	✓
UTS	✓	✓	✓	✓
Saturn	-	✓	✓	✓
Frameless	-	✓	✓	✓

Standards	Primedrive/FR [*]	Primedrive240	Primedrive/H	Primedrive239
DIN18650	✓	✓	✓	✓
EN16005	✓	✓	✓	✓
EN60335	✓	✓	✓	✓
EN ISO 13849	✓	✓	✓	✓
TÜV approved	✓	✓	-	✓
CE conformity	✓	✓	✓	✓
Tested for 1,000,000 cycles	✓	✓	✓	✓

^{*}Escape version



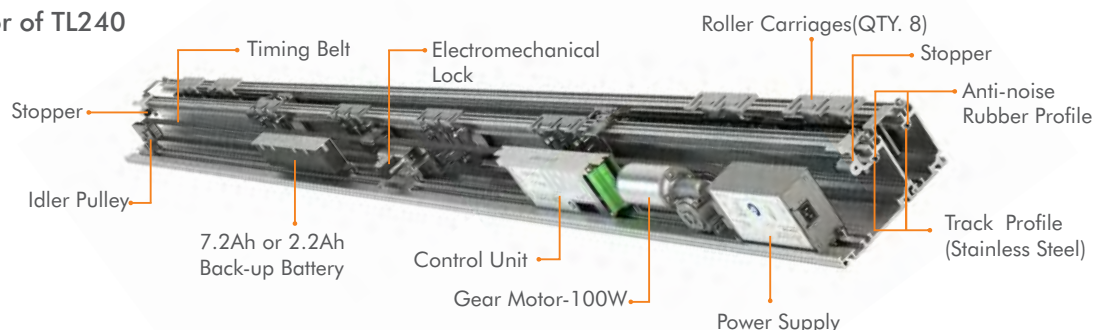
Curved/Telecopic & Breakout Sliding Doors

Ideal solutions to satisfy certain architectural needs

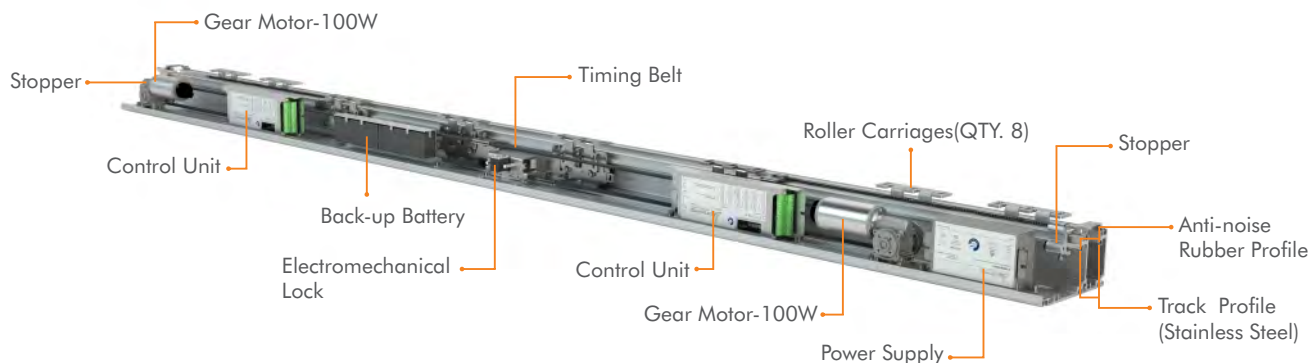
TL240/TL240ES-Space Saving Telescopic Sliding Doors

Telescopic sliding doors offer you a wide clear opening where space may be too restricted for a standard sliding door. The opening width for the two leaf version is up to 3000mm and 4000mm for the four leaf version. Employing TL profile set and kit, you will be able to transform your normal sliding door into a telescopic sliding door. Due to having four moveable leaves instead of two, which is much more convenient in a limited space TL240 operates either two leaves of 150kg each or four leaves at 4x100kg each and the operator is 155mm high and 226mm deep.

Operator of TL240



Operator of TL240/ES



TL series is designed in a way that the back leaves move with half the speed of the front leaves. With this stealthy coordinated movement, both back and front leaves reach the fully-open point simultaneously and provide you with an opening up to 2/3 of the installed width.

TL series' telescopic mechanism is designed and made in a way that can easily give a brilliant performance in places with high traffic. Having passed the one-million-cycle test, this mechanism is also considered suitable for escape doors.



BO240 - Break-Out Systems

In times when a mechanical system for emergency exit is required or in places where there might be a need for full opening of the door, whether it is fixed or moveable, to allow oversized objects to pass, Deuschtec collapsible SLH series is the preferred option. In case of emergency, both fixed and moveable doors open like swing doors by simply pushing the doors. BO240 has been certified to meet DIN18650, EN16005, EN 60335, EN ISO 13849 to name but a few.



CR240-Curved Sliding Doors

Our beautiful curved sliding doors add a luxurious touch to any façade. They are a fantastic alternative to revolving doors where a wider opening or more transparency are required. For even more additional lightness we offer an All Glass version with underfloor operator to complement the building design. Our circular sliding doors may even be combined with an in-ground air-curtain to maintain temperatures in the lobby area. A Deutschechtec curved sliding door is the perfect choice when you desire a fabulous entrance that offers great ease of passage at busy peak times.



Curved Sliding Doors, Telescopic Sliding Doors & Break-out Sliding Doors Product Overview

Technical Detail	TL 240	TL240ES	BO240	CR240
Opening width - single panel	-	-	800 - 1200 mm	800 - 2000 mm
Opening width - double panel	900 - 3000 mm	900 - 3000 mm	1000 - 2200 mm	1000 - 3000 mm
Opening width - four leaves	1800 - 4000 mm	1800 - 4000 mm	-	-
Opening width - Break-out position	-	-	2500 - 4500 mm	-
Max leaf weight, single	-	-	1 x 200 Kg	1 x 200 Kg
Max leaf weight, double	2 x 150 Kg	2 x 150 Kg	2 x 150 kg	2 x 150 Kg
Max leaf weight, four	4 x 100 Kg	4 x 100 Kg	-	-
Operator height	155 mm	155 mm	155 mm	210 mm
Operator depth	226 mm	226 mm	160 mm	270 mm
Opening speed	Variable up to 1.1m/s (Four Leaves)	Variable up to 1.1m/s (Four Leaves)	Variable up to 1.1m/s (Double leaves)	-
Closing speed	Variable up to 1.1m/s (Four Leaves)	Variable up to 1.1m/s (Four Leaves)	Variable up to 1.1m/s (Double leaves)	-
Hold-open time	0 - 30 s	0 - 30 s	0 - 30 s	0 - 30 s
Ambient temperature	-15 to + 50°C	-15 to + 50°C	-15 to + 50°C	-15 to + 50°C
Protection class	IP20	IP20	IP 20	IP 20
100% German-made operator kit	✓	✓	✓	✓
Track profile	anti-crash stainless steel/aluminium	anti-crash stainless steel	anti-crash stainless steel	-
Anti-noise rubber profile	✓	✓	✓	-
External protected power supply	✓	✓	✓	✓
Power supply unit	230V/33V,50VA (Peak120VA)	230V/33V,50VA (Peak120VA)	230V/33V,50VA (Peak120VA)	230V/33V,50VA (Peak120VA)
Gear motor power	100 W	100 W	100 W	100 W
Number of motors	1	2	1	1
Number of control units	1	2	1	1

Technical Detail	TL 240	TL240ES	BO240	CR240
Number of hangers per leaf	2	2	2	1 with 6 rollers
Second motor for emergency opening	-	✓	-	-
Dual gear motor and control unit set for master and slave concept	-	✓	-	-
Max power consumption	250 W	250 W	250 W	250 W
Backup battery for emergency opening	-	✓	-	-
Max operation cycles with 2.2 Ah battery (Optional)	≈400	-	≈400	≈400
Max operation cycles with 7.2 Ah battery (Optional)	≈1000	-	≈1000	≈1000
Possibility to adjust force limitation according to DIN18650 and EN16005	✓	✓	✓	✓
Possibility to use safety sensors with testing signal	✓	✓	✓	✓
Emergency exit routes in both directions	-	✓	-	-
Mechanical key switch (Optional)	✓	✓	✓	✓
24V DC output for external accessories	✓	✓	✓	✓
Power Lock	✓	✓	✓	✓
Possibility of using electromechanical lock (Optional)	✓	✓	✓	✓
Lock monitoring	✓	✓	✓	✓
Possibility of using digital program switch (Optional)	✓	✓	✓	✓
Read-out error memory with error codes (with digital program switch)	✓	✓	✓	✓
Programmable output (Optional)	✓	✓	✓	✓
Programmable input (Optional)	✓	✓	✓	✓
Max Glass Thickness (mm)	TBS,UTS = 22mm THB=32mm Saturn=10 mm	TBS,UTS = 22mm THB=32mm	32 mm	22 mm

Standards	TL 240	TL240ES	BO240	CR240
Compliant with German standard DIN 18650	✓	✓	✓	✓
Compliant with EU standard EN 16005	✓	✓	✓	✓
Compliant with EU standard EN 60335	✓	✓	✓	✓
Compliant with EU standard EN ISO 13849-1	✓	✓	✓	✓
Compliant with EU low-voltage directives	✓	✓	✓	✓
Compliant with EU EMC directives	✓	✓	✓	✓
Manufactured according to ISO 9001	✓	✓	✓	✓
TÜV approved	✓	✓	-	-
CE conformity	✓	✓	✓	✓
Tested for 1.000.000 cycles	✓	✓	✓	-

Frame Types

THB	✓	✓	- *	-
TBS	✓	✓	-	✓
UTS	✓	✓	-	✓
Saturn	✓	-	-	-

*Special break- out frame



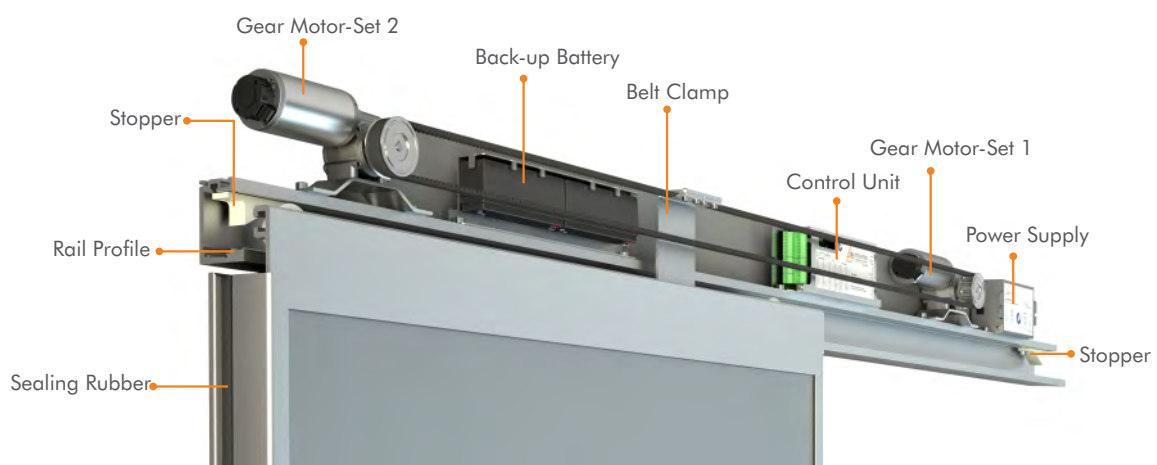
Hermetic Doors

Environments such as hospitals, health clinics, laboratories and medical centers require close attention to every detail as these places play a key role in the most significant aspect of our lives: our health. For this reason, we at Deutshtec have made sure that a wide variety of sleek yet highly efficient solutions are available to satisfy all needs. These doors are designed and made complying with the highest and most recent standards and legislations on hygiene and contamination control.

Hermetic Doors

Our hygiene products are shining examples of how safety, functionality, stability and durability can come together effortlessly and beautifully. The hermetically sealing sliding door has been specifically designed for use in areas where hygiene and the control of air leakage are critical. The door has a unique patented track system which enables it to seal perfectly when closed helping to reduce air handling costs, cross contamination and wound infections.

The operator has been designed for normal operation as pedestrian sliding door or alternatively for an impenetrable sealing of dry rooms or clean rooms.



Technical Detail Hermetic

Opening width - single panel	up to 3000mm
Max leaf weight, single	1 x 200kg / 2 x 100kg
Max Opening height	up to 2500mm
Operator height	212 mm
Operator depth	117 mm
Opening speed	Adjustable from 0.1 – 0.4m/s
Closing speed	Adjustable from 0.1 – 0.4m/s
Hold-open time	0 - 30 s
Ambient temperature	-15 to +50°C
Protection class	IP 20
External protected power supply	✓
Power supply unit	230V/33V,50VA (Peak 120VA)
Gear motor power	2 x 100 W
Max power consumption	250 W
Possibility to adjust force limitation according to DIN18650 and EN16005	✓
Possibility to use safety sensors with testing signal	✓
Floor guides	Reinforced Plastic guides
Sealing frame	Aluminum
Surround frame	Aluminum
Integrated window in door leaves (optional)	✓

Technical Detail Hermetic

Touchless button (optional)	✓
Electromechanical lock(optional)	✓
Inside and outside lever handle set (Optional)	Stainless steel

Door Panel Finishes

HPL panel for air-tight rooms	✓
Powder coated steel panel	✓
Stainless steel panel	✓
Lead panel for x-ray rooms	✓
Double or triple glazed panel	✓

Standards	Hermetic
Compliant with German standard DIN 18650	✓
Compliant with EU standard EN 16005	✓
Compliant with EU standard EN 60335	✓
Compliant with EU standard EN ISO 13849-1	✓
Manufactured according to ISO 9001	✓

Standards	Hermetic
Compliant with EU low voltage directives	✓
Compliant with EU EMC directives	✓
Tested and classified based on NF EN 12207*	✓
Tested and classified based on NF EN 1026**	✓
Tested and classified based on DIN EN 20 140-3***	✓

*NF EN 12207

This European Standard defines the classification of test results for completely assembled windows and external and internal pedestrian door sets of any material after testing in accordance with EN 1026. The classification is based on a comparison of the air permeability of the test specimen related to overall area and on the air permeability related to the length the opening joint. There are four different classes for each classification method.

**NF EN 1026

This European Standard defines the test method to be used to determine the air permeability of completely assembled windows and door sets of any material when submitted to positive or negative test pressures. This test method is designed to take account of conditions in use when the window or door set is installed in accordance with the manufacturer's specification and the requirements of relevant European Standards and codes of practice.

***DIN EN 20 140-3

This standard specifies a laboratory method of measuring the airborne sound insulation of building elements such as walls, floors, doors, windows, facade elements and facades, except those classified as small building elements. The results obtained can be used to design building elements with appropriate acoustic properties, to compare the sound insulation properties of building elements and to classify such elements according to their sound insulation capabilities. The measurements are performed in laboratory test facilities in which transmission of sound on flanking paths is suppressed. Results of measurements are made in accordance with this standard therefore it shall not be applied directly in the field without accounting for other factors affecting sound insulation, especially flanking transmission and loss factor.



Automatic Revolving Doors

Doors which are open yet closed all the time! Deutshtec revolving doors are chic and eye-pleasing solutions which also offer the highest levels of energy-saving by reducing energy exchange between the inside and outside of buildings.



 **RV320/RV420**
Chic, eye-pleasing, energy-saver

RV320/RV420

DeutscheTec RV320 and RV420 are chic and eye-pleasing solutions which that also offer the highest levels of energy-saving by reducing energy exchange between the inside and outside of buildings. When combined with our underfloor heating system, only warm air is introduced into the building's lobby area. DeutscheTec Revolving Doors, which are available as three and four-leaf models bring elegance to the entrance area of any building and bestow magnificence upon your facade. This marvelous combination of glass and metal together with the advanced technology we have made use of creates a breathtaking first impression. A true celebration of the entrance and a warm welcome to your visitors. Having met all safety requirements and standards, RV320 and RV420 guarantee your maximum security indefinitely.



Features :

- Stunning design which gives any building a glamorous look.
- In compliance with DIN 18650 and EN 16005 standards.
- Five operating modes: summer position, fully-automatic, manual, continuous rotation, lock.
- Three and four-leaves models.
- Adjustable speed for individuals with slow movements.
- Straightforward installation and commissioning.
- Easy programming and maintenance.
- Optional collapsible door leaves.
- Maximum levels of safety.
- Smooth silent function.

Technical Detail

RV320/420

Outside diameter D (mm)	2000 - 3800
Canopy height (mm)	≥ 200
Opening width A (mm) / 3 leaves	ca. 950 - 1850
Opening width A (mm) / 4 leaves	ca. 1355 - 2615
Drum walls, curved laminated glass 8 - 12 mm	✓
Toughened safety glass door leaf 10 - 20 mm	✓
Drum walls, sheet metal paneling, thermal insulation	✓

Operation Modes

Manual	✓
Fully-automatic (radar motion detector)	✓
continuous rotation	✓
Lock	✓
summer position optional	✓

Characteristics, Options

For use in escape and rescue routes	Optional
Horizontal or vertical door handles	Optional
LED lamps in the ceiling	Optional

Floor Ring, Floor Covering

RV320/420

Floor ring	Optional
Floor mat	Optional

Night Locking Sliding Door

Outside-running, manual	Optional
Glass	Optional

Locking

Shoot bolt lock on the leaf, manual	Optional
Electromechanical lock	Optional

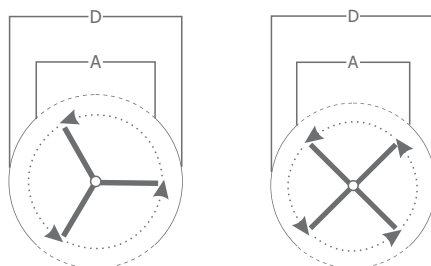
Roof Construction

Dust Roof Protection	Optional
Ceiling in system color	✓
Exterior waterproof roof with drainage system	Optional

Finishes

Choice of RAL color	Optional
Anodized	Optional
Brushed stainless steel	Optional
Polished stainless steel	Optional

Standard	RV320 - 3 leaves	RV420 - 4 leaves
DIN 18650	✓	✓
EN 16005	✓	✓
EN 60335	✓	✓
EN ISO 13849-1	✓	✓
AutSchR	✓	✓
CE conformity	✓	✓



Diameter (mm) - D	Opening width - A / RV320 - 3 leaves	Opening width - A / RV420 - 4 leaves
2000	950	1355
2200	1050	1495
2400	1150	1635
2600	1250	1775
2800	1350	1915
3000	1450	2055
3200	1550	2195
3400	1650	2335
3600	1750	2475
3800	1850	2615



 **RVU300/RVU400 - RVU300C/RVU400C**
Oversize All-Glass Revolving Doors & Full Height Pass Doors

RVU300/RVU400 RVU300C/RVU400C

The entry into any building is the first element which welcomes its visitors. The entrance being the building's focal point must therefore guarantee the essentials: durability, safety and service. With today's technology, revolving doors are believed to be the most environmentally-friendly and energy-saving solutions. This is due to the fact that this type of entrance follows the "always-open, always-closed" rule. This means that there will be a barrier between the air inside and outside the building which, in turn, results in less noise, dust and draught. Conclusion:



- Less Noise Pollution
- Lower Air Pollution
- Less Energy Loss
- Less Draughts
- Lower Carbon Footprint

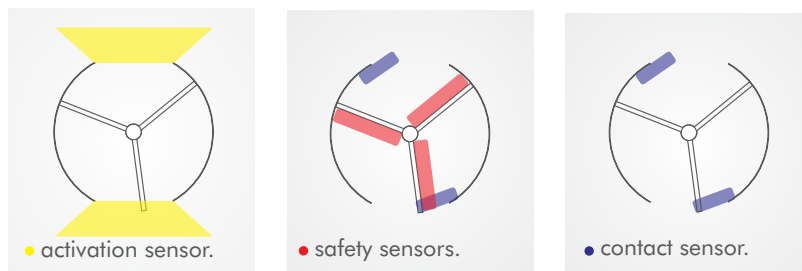
Ambient lobby and environmental temperatures maintain overall comfort and promote a better working and living environment.

We have taken revolving door safety to another level!

We constantly strive to engineer State-of-the-Art products. Safety is of paramount concern and leads our R&D process. As such we have developed a safety system which is reflected in our "Pro-Active Safety" System. This means that all our revolving doors do NOT require individual physical contact before the emergency stop is activated and the revolving leaves STOP.

Our "Proactive Safety" System:

Using 3D laser scanning technology ALL critical safety zones are monitored 24/7. Via our unique drive system, the rotational speed is controlled and adjusted constantly depending solely on people activity. Simply getting too close means the doors slow down. Get even closer, the doors will STOP. No physical "crunch" contact with rubber bumpers necessary to STOP our revolving doors in an emergency. The door control system reacts to different impulses received from sensors and switches. These are outlined below showing the pinch zones on a revolving door and the sensors used to safeguard these areas.



Activators (yellow)

Activation sensors are used to observe people activity inside and outside the entrance area of the revolving door. If a person is within scanning zone the door will start rotating.

Safety sensors (red)

State of the art laser technology is used at the critical areas shown in red inside and outside the door, as shown above.

Bumper (blue)

Vertical rubber bumpers with built in safety sensor cables are only activated by physical contact with the rubber bumper.

We have developed an elegant minimal solution to address this critical "pinch" zone.

NO physical touch or "pinch" is necessary to STOP the revolving door in an emergency.

Our engineering development together with 3D laser technology means:

'get close and the door will slow down, get even closer and the door will stop'.



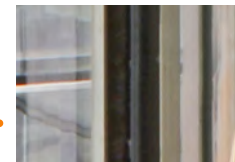
3D Safety Laser Scanner:
Safety device positioned to monitor critical internal areas.



Activation & Safety Laser Scanner:
A device positioned at each entry point providing activation and safety monitoring.



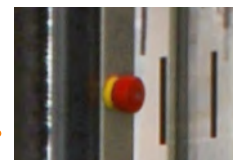
Top Hanger:
It facilitates the rotation motion and is positioned at the top of rotating structure. This part has a unique design in terms of its dimension.



Minimal Profile Edge Detail:
Contains safety sensors that are activated by pressure against the profile edge.



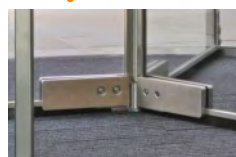
Floor Mat (Made in Germany):
17mm roll-up heavy duty matting for easy access to underfloor operator for maintenance and service. Can be extended seamlessly into the lobby area.



Emergency Stop Button:
Stops the door immediately in the event of danger by disconnecting the power. Manual operation is still possible.



Pure Horse Hair Brush Seals:
At the top, bottom and leading edge of the door leaf.



Door Boss:
Rotates the door leaves with a unique design and dimensions appropriate for the size and weight of door leaves.



Accessible Push Pad:
Once activated, the Accessible Push Pad slows the door speed down to 1. This mode cannot be interrupted for one complete 360 revolution in a revolving door or one complete opening cycle for sliding doors. The only possible way to interrupt the accessible mode is to push the emergency stop button. Once the revolution or opening cycle is complete the door returns to its normal operating speed. If a revolving door is in standby mode the door will start rotating slowly when the Accessible Push Pad is pressed.

Operation Modes

Our RV and RVU revolving system has five different operation modes, which can be set by the mechanical or digital key switch. It is possible to adjust the setting via our wireless DMS application. The five different modes of operation are:

Off/Close

In this mode, the turnstile is in a fixed position and the door can be locked. The locking of the door can be automatic by electronical means or manual with a key, depending on the choice of lock. The position in which the door stops is in Y position for a 3-leaf door and in X position for a 4-leaf door. The lock is located on one rotating door leaf.



Constant

The door revolves slowly without any external activation caused by people's movement. When activated by a person the door speeds up to normal rotational speed. The normal rotation is continued until there are no more external activation impulses, (people activity). If there are no further activation signals, (people activity) the rotating leaves will return to its energy-saving slow rotational mode.



Automatic

The door starts to rotate when it is activated by people movement. When there is no further activation signal the door stop in a specific position



Summer

In this mode the door leaves stop in a specific position to prevent external air from entering the building between the movable and fixed leaves while the door stops. This option prevents wasting precious energy during summer and winter months.



Manual

In this mode the door can be rotated by hand. This mode is intended for regular cleaning and maintenance.



Safety

- Activators [yellow]
- Safety sensors [red]
- Bumper [blue]
- Safety warnings



Automatic Swing Doors

Deuschtec Swing Door is the ultimate solution for places where modern architecture meets conventionality. This model's universality is a result of its incredible electromechanical construction together with its genius design. Taking your different needs into account, Deuschtec Swing system is equipped with a powerful German-made motor.

SW40

lasting protection

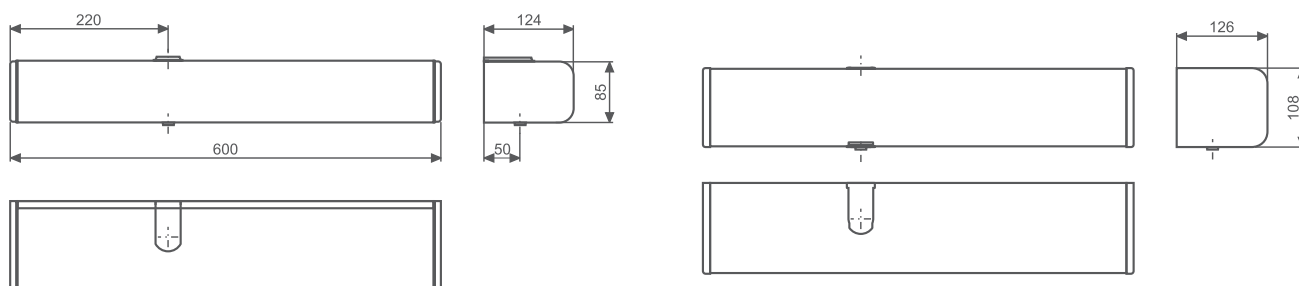
Deuschtec SW40/I and SW40/F escape models are there to make sure no harm is done under any circumstances. Your safety is of crucial importance to us.



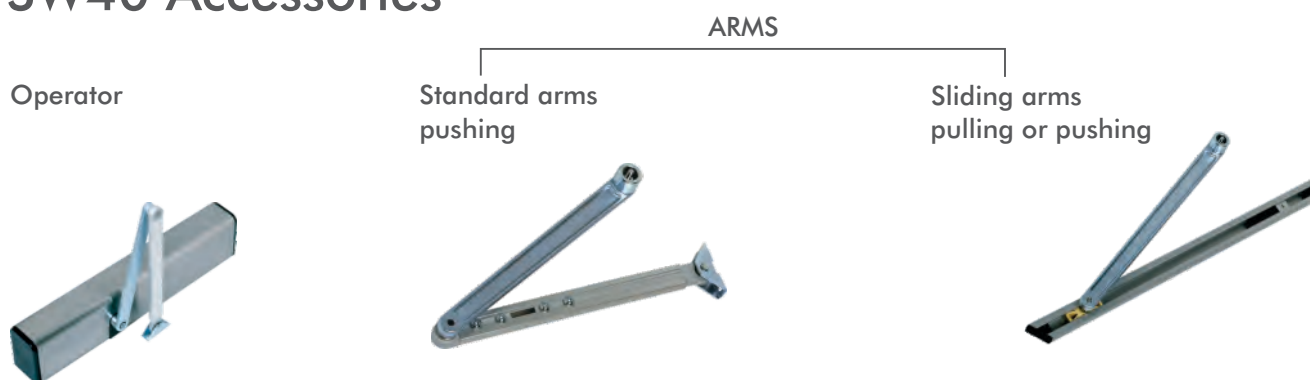
Technical data

Dimensions of the operator (H x W x L)	85 x 124 x 600 mm or 110 x 126 x 600 mm
Opening angle	3 - 20 s / 5 - 20 s
Electrical power supply	230 V AC, 50/60 Hz
Rated power	67 W
Consumption in standby mode	13 W
Operating modes	Automatic operation Continuously open Manual operation
Functions	Automatic reverse Touch control (push and go) Emergency stop, interlock control for 2-leaf doors Customer-specific door parameters

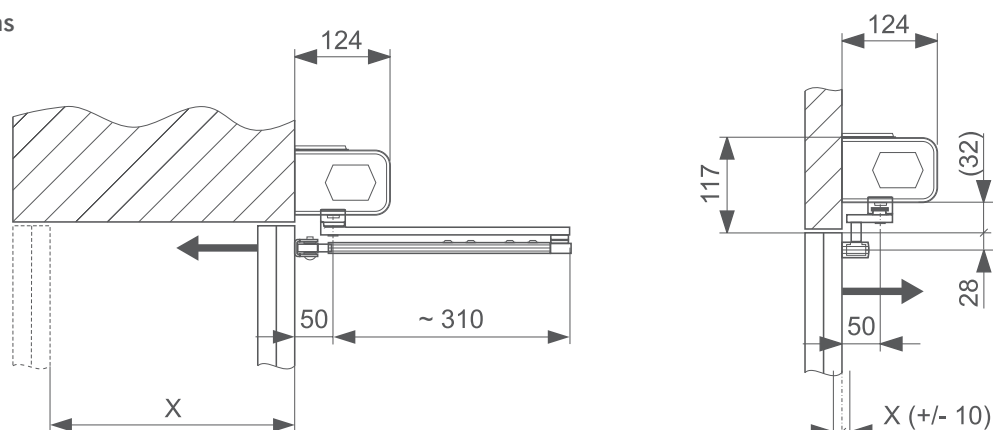
SW40 Technical data



SW40 Accessories



Lintel depths





Gorgeous, Energy-Saving and Trustworthy

Deuschtec Products can be matched with many different types of frames such as THB, TBS, UTS and Saturn and they can even be integrated into all-glass frameless systems.

This versatility allows our products to be integrated into any style of architecture seamlessly.

THB

A great choice of frame to pair with this impeccable series is thermal break frames (THB) which by insulating the door against undesired or harsh weather conditions, save energy and consequently, your budget! Furthermore, since these are incredibly strong frames, they are an ideal option when heavy doors are required.



TBS

When saving energy is of importance, the TBS frame is an economical and inexpensive solution. Besides being a thermal break it is suitable for double-glazed doors. Its minimalist dimensions and the unique combination with the Deuschtec SLH series, means the upper horizontal profile is hidden inside the operator case, making the TBS a smart choice for modern architecture. TBS is certified for use on emergency exit doors.



UTS

This frame is the non-thermally broken version of TBS with all its other advantages especially because it is priced even more competitively whilst enjoying all of TBS aesthetics. UTS is suitable for internal doors and for places where the exchange of cold and hot air does not matter much, UTS is excellent value.



SATURN

This is a reasonably-priced frame suitable for single-glazing and tempered glass. When you wish to have a glass frontage and yet, prefer to use a discreet frame instead of frameless glass, Saturn is a convenient low-cost solution.



FRAMELESS

An elegant aesthetically pleasing all-glass system the perfect choice for modern architecture. Frameless glass doors provide excellent light exchange between inside and outside.



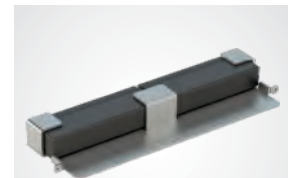


Trustworthy and User-Friendly

User-friendly has been given a whole new meaning with Deutschtec accessories. Deutschtec offers a wide range of accessories for different types of automatic doors.

Back-up Batteries

We are offering you doors which will not fail in the event of a power-cut. Deuschtec back-up batteries provide the system with a steady flow of energy. In the event of a power-cut, the 2.2 Ah battery will provide you with ≈ 450 opening or closing cycles and the 7.2 Ah battery will open and close your door up to 1100 times. No matter what, Deuschtec doors with their marvelous operating systems will not let you down!



Prime-Series
Airdrive-Series

Airdrive Battery (2.2 Ah)



General Battery (7.2 or 2.2 Ah)

Digital Program Switch

User-friendly has been given a whole new meaning with this digital Program switch's easy-to-read, full-text display. You will get easy access to all performance data and parameters and for any special need you might have, its adjustment and diagnostic processes can be accurately duplicated or customized. Protection password code is another significant feature of this digital Program switch. Such a terrific "optional" part cannot be ignored!



Prime-Series
Airdrive-Series
SLH-Series

Mechanical Key Switch

Our Mechanical Key Switch offers five modes of operation: fully open, partial open, lock, automatic and one-way. Simple yet functional, this is another accessory which will definitely come in handy.



Prime-Series
Airdrive-Series
SLH-Series

Electromechanical Lock

Deutschtec electromechanical lock has been a reliable way to safeguard your security at all times. It utilises steel pins to lock both leaves simultaneously and therefore, is much safer than using the timing belt as lock or locking just one leaf. Furthermore, since it employs bi-stable mechanism, a system power reset does not affect the state of the lock. Due to using powerful batteries and an intelligent quality circuit, battery usage is reduced to zero when the door is locked and there is a power-cut.



Lock - Airdrive

Prime-Series
Airdrive-Series



Lock - General

Accessible Push Pad

Once activated, the Accessible Push Pad slows the door speed down to 1. This mode cannot be interrupted for one complete 360 revolution in a revolving door or one complete opening cycle for sliding doors. The only possible way to interrupt the accessible mode is to push the emergency stop button. Once the revolution or opening cycle is complete the door returns to its normal operating speed. If a revolving door is in standby mode the door will start rotating slowly when the Accessible Push Pad is pressed.



Prime-Series
Airdrive-Series
Revolving -Series
SW Swing Series

Emergency Stop

This button stops the door immediately by cutting off the motor power supply. After the Emergency Stop has been pushed Revolving Doors and Primedrive Sliding Doors can only be operated manually and must be re-activated by a qualified person because the control unit has to be reset.



Prime-Series
Revolving -Series

BEA Sensors - from Europe's leading manufacturer

BEA IXIO-D:

The BEA IXIO-D is a sensor that combines radar technology for the activation of the door with infrared technology for user protection. The unidirectional radar enables energy savings to be made. The three-dimensional infrared curtain protects people from any contact with the doors. Thanks to the LCD screen and the BEA DECODER app sensor configuration has never been easier.



BEA VIO-D:

The VIO-D combines a motion radar sensor for opening the door with a double failsafe active infrared curtain for the protection of users, in accordance with EN 16005. Opening and closing the door is controlled by a unidirectional radar and safety is ensured by the two 24-infrared spot failsafe curtains.



BEA ZEN:

ZEN is an economical bidirectional radar sensor for automatic sliding doors. It features Bidirectional detection offering a reliable and comfortable opening. It has an adjustable radar angle (vertical) and an adjustable detection field via potentiometer. Its plug and play readiness makes it very easy to install.



BEA Zensafe:

ZENSAFE is a dual technology sensor combining the microwave technology for opening and active infrared technology for safety.



Optex OA-Flex:

It is an active Infrared Door Sensor for Sliding Doors or Swing Doors. OPTEX OA-Flex features whole presence detection capability for more safety and reliability. The OA-Flex T also features BlueZone TM technology and monitoring capability.



BEA IXIO-ST

This sensor model support pedestrian door models. Its high technology keeps all pedestrians safe.



BEA Flat Scan-High precision laser scanner for swing doors

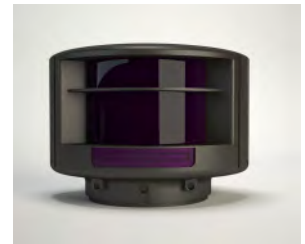
The BEA LZR-FLATSCAN is a safety sensor designed for swing doors that generates 170 measurement points that provide a complete protection for swing doors and their users. A single FLATSCAN SW covers the entire door leaf including the hinge area. The perfect solution for all-glass and oversized swing doors.



BEA Laser Scanner for Revolving Doors

The laser scanner is the first laser safety sensor specifically designed for automatic revolving doors. It uses time-of-flight technology and generates 400 measurement points to provide a complete protection for users while ensuring the effective functioning of the door.

This is a universal safety solution for sliding, swing and revolving doors designed in conformity with the DIN 18650 and EN 16005 standards and a detection field of maximum 5m x 5m.



BEA Magic Switch - No-contact Opening Sensor for Automatic Doors

The MAGIC SWITCH CHROMA is a touchless opening sensor for automatic doors. One hand movement in front of the sensor opens the door, completely contactless. It is the perfect sensor to safeguard hygiene and prevent contamination.



COLIBIRI TWO DRO BLK

Other use of the device is outside the permitted purpose and can not be guaranteed by the manufacturer.

The manufacturer cannot be held responsible for incorrect installations or inappropriate adjustments of the sensor.





Hardware

Manual Overhead Closers & Floor Springs

Manual Overhead Door Closers-High Quality & Easy to Use

Deutschtec GmbH provides premium quality engineering and aesthetically pleasing design without exception. Our manual door closers meet EN1154 requirements and offer reliable, stylish and innovative solutions with a range of options in terms of manual overhead door closers and floor spring designs.

Floor Spring DE-71

The DE 71-HO series offers a wide range of floor springs that provide safety and security, designed to meet the functional and visual goals of any commercial building. DE 71-HO concealed closers create many design options. They are available with a range of specialty accessories and can be used with aluminum, timber or metal doors and frames. DE 71-HO is available in one fixed power size EN2, suitable for door leaves weighing up to 80kg.



Floor Spring DE-76 HO (with hold-open facility)

The DE 76-HO range of floor closer springs are enhanced with powerful yet easy to use mechanisms. Whether standard, narrow or wide, whether LH, RH, or single or double action – DE 76-HO floor springs are designed for all types of doors. Available in four power sizes, EN1, EN2, EN3, EN4, and a EN1-4 adjustable version, suitable for doors up to 150kg.



Slimline Floor Spring DE-80

The slim and versatile DE- 80 range of floor springs is suitable to almost any installation. The closer's compact body permits installation where a larger closer would be prohibitive, even in a thin concrete subfloor slab. Available in three fixed power sizes , EN2, EN3, and EN4, suitable for door leaves weighing up to 100kg.



Manual Overhead Door Closer DE-88-HO (with hold-open facility)

The manual overhead door closer DE-88 HO with hold-open (HO) facility is the perfect solution for doors that need to be closed under normal circumstances yet may have to be held open at specific angles at certain occasions. DE-88 HO is suitable for doors up to 100 kg in weight and a door leaf width of up to 1250 mm. The closer size is EN 2-5.



Door Closer DE-88-NHO

The manual overhead door closers DE-88 NHO without hold-open facility is the perfect solution for doors that need to be closed under normal circumstances. DE-88 NHO is suitable for doors up to 100 kg in weight and a door leaf width of up to 1250mm. The closer size is EN2-5.



Door Closer DE-118-HO

The manual overhead door closers DE-118 HO with hold-open (HO) facility is the perfect solution for doors that need to be closed under normal circumstances yet may have to be held open at specific angles at certain occasions. DE-88 HO is suitable for doors up to 80kg in weight and a door leaf width of up to 1100mm. The closer size is EN2-4.



Door Closer DE-118-NHO

The manual overhead door closers DE-118 NHO without hold-open facility is the perfect solution for doors that need to be closed under normal circumstances. DE-88 NHO is suitable for doors up to 80 kg in weight and a door leaf width of up to 1100mm. The closer size is EN2-4.





Applications

Creative Solutions To Control Your Doors

DMS & DMS⁺

Automatic Doors Setting & Networking



DMS & DMS⁺

DMS (Door Management System) is a desktop application that helps you monitor and control each Deutschtec door with your personal computer or laptop. You just need to connect your computer to the door using a USB cable and run DMS.

You can simply view and modify the door status as you desire.



You may define authentication passwords, to prevent unauthorized people from changing any door configurations.



DMS allows you to view all Settings in a single view, and set new values for them.



DMS enables you to run procedures such as Door Initial Setup, Factory Reset and Creating User Defaults with a few single clicks.



DMS⁺

Although DMS is an invaluable tool, it may be challenging to connect a computer to the door. To address this situation we have developed DMS⁺, a smart phone app including all DMS functionalities, and even more.



By using DMS⁺, you can choose your connection media from the available choices, Bluetooth, Local Wi-Fi, or Web.



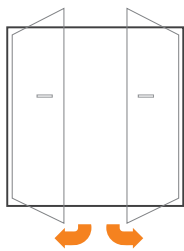
The Bluetooth connection will be directly connected to one door. But if you use the other connection choices, you can simultaneously control all the doors detected in local Wi-Fi, or registered on the web.



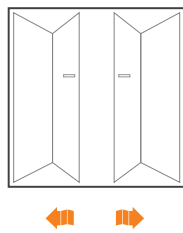
DMS⁺ let you view and modify the doors status and settings, and execute any available procedures such as Factory Reset and Initial Setup.



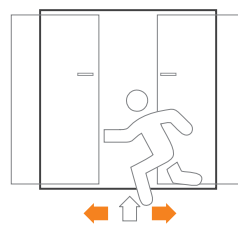
Overview



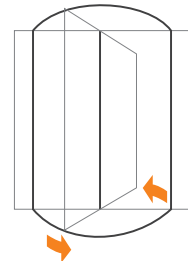
Swing Door



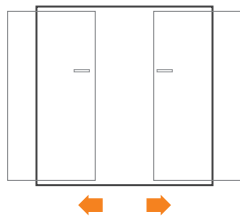
Folding Door



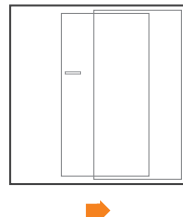
Escape Door



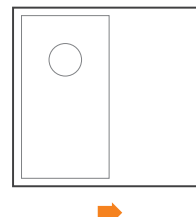
Revolving Door



Sliding Door



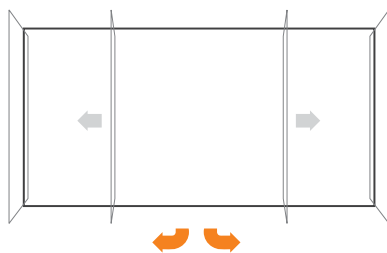
One Left Sliding Door



Hermetic Door



Telescopic Door



Sliding Break out Door



Curved Sliding Door



DIN Left



DIN Right



Am Fuchsbau 13
15345 Petershagen/Eggersdorf
Deutschland

Phone: +49 (0)3341 30 22 4 - 0
Fax: +49 (0)3341 30 22 4 - 25

www.deuschtec.de
info@deuschtec.de



EN.17.04122022